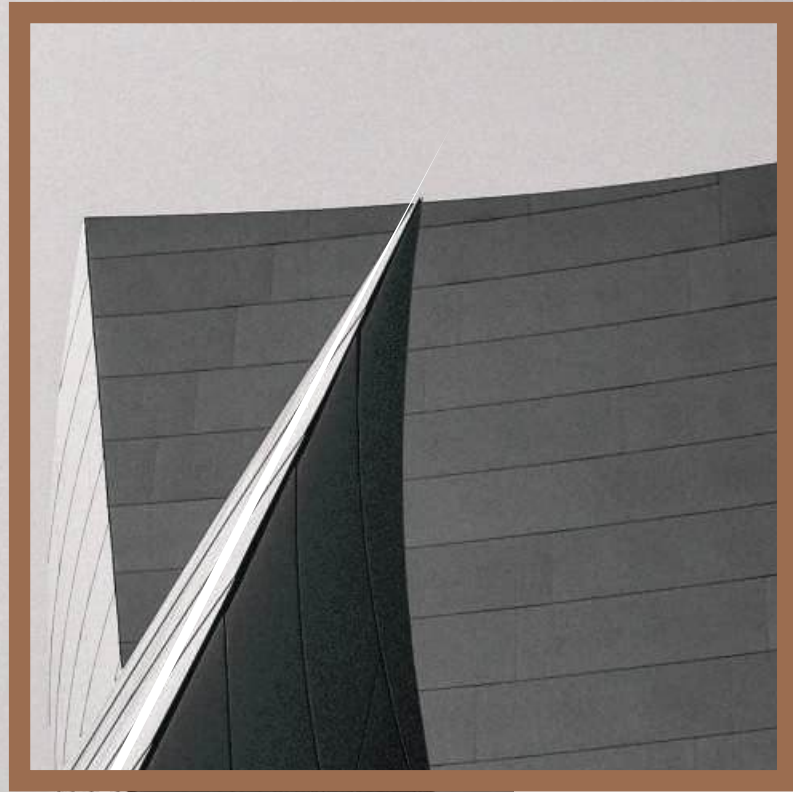


TARNISH METALLUM



Viva[®]
Metal Composite Panel

About us

Established Innovators

Pioneering the ACP Industry since 2003

State-of-the-Art Facilities

Equipped with cutting-edge machinery in Gujarat for high-quality ACP always.

Customer-Centric Approach

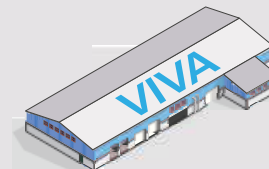
We are committed to customer satisfaction with our value-engineered high-quality products.

What Sets Us Apart?



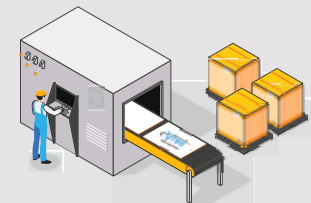
25+ Years

Manufacturing Excellence



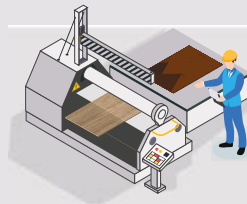
14 Production Lines

State-of-the-Art Facility



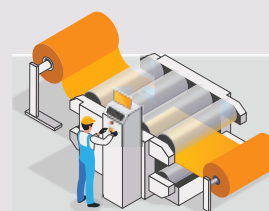
15 Million M²

Annual Production Capacity



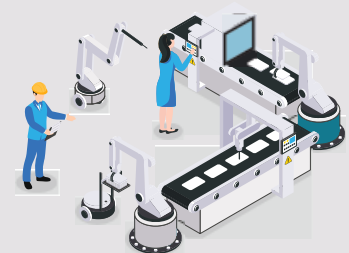
500+ Shades

Infinite Customisation



4 Colour Coating Lines

Upto 1670 mm



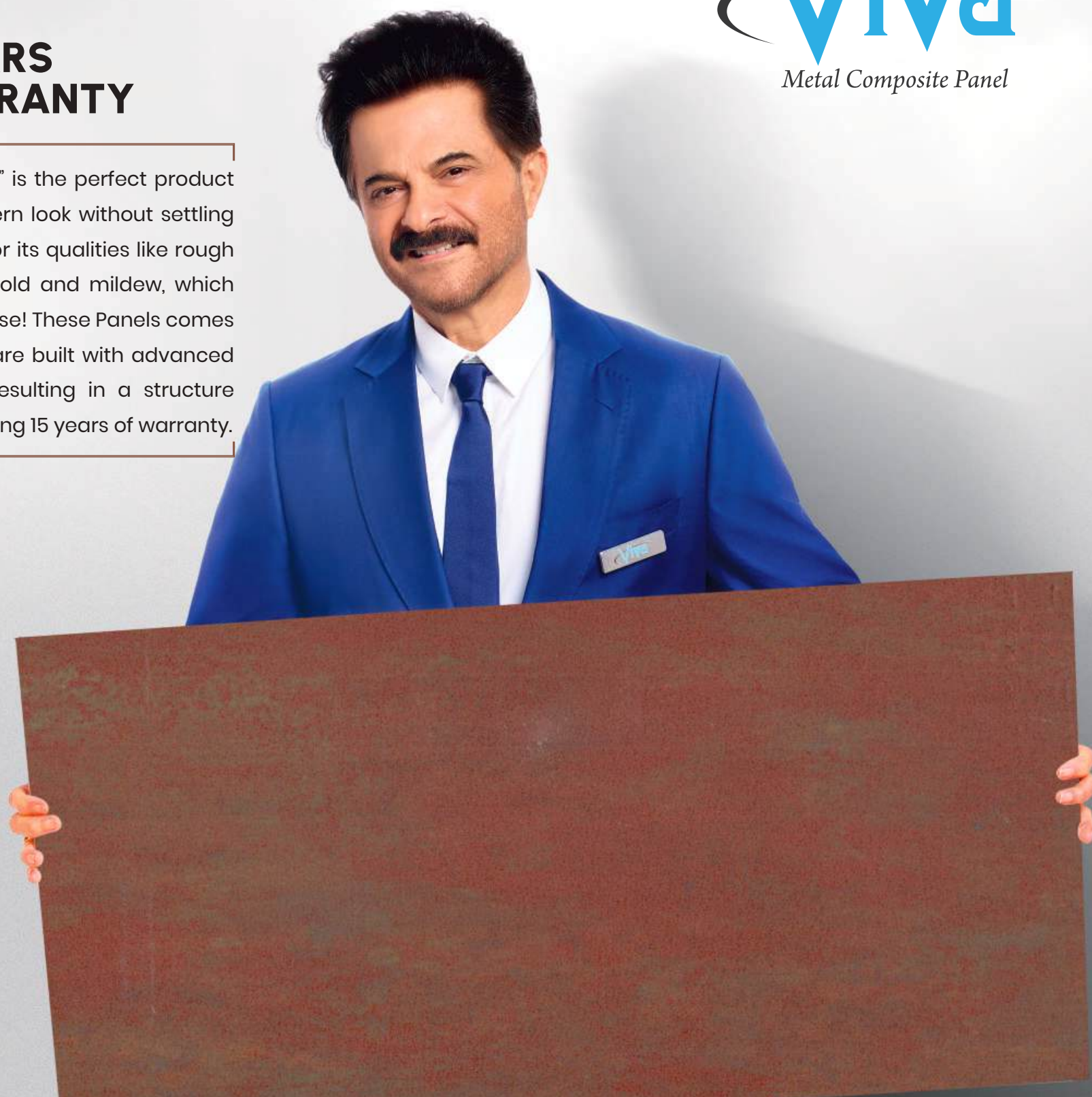
100+ Quality Test

In-house Labs

15 YEARS WARRANTY



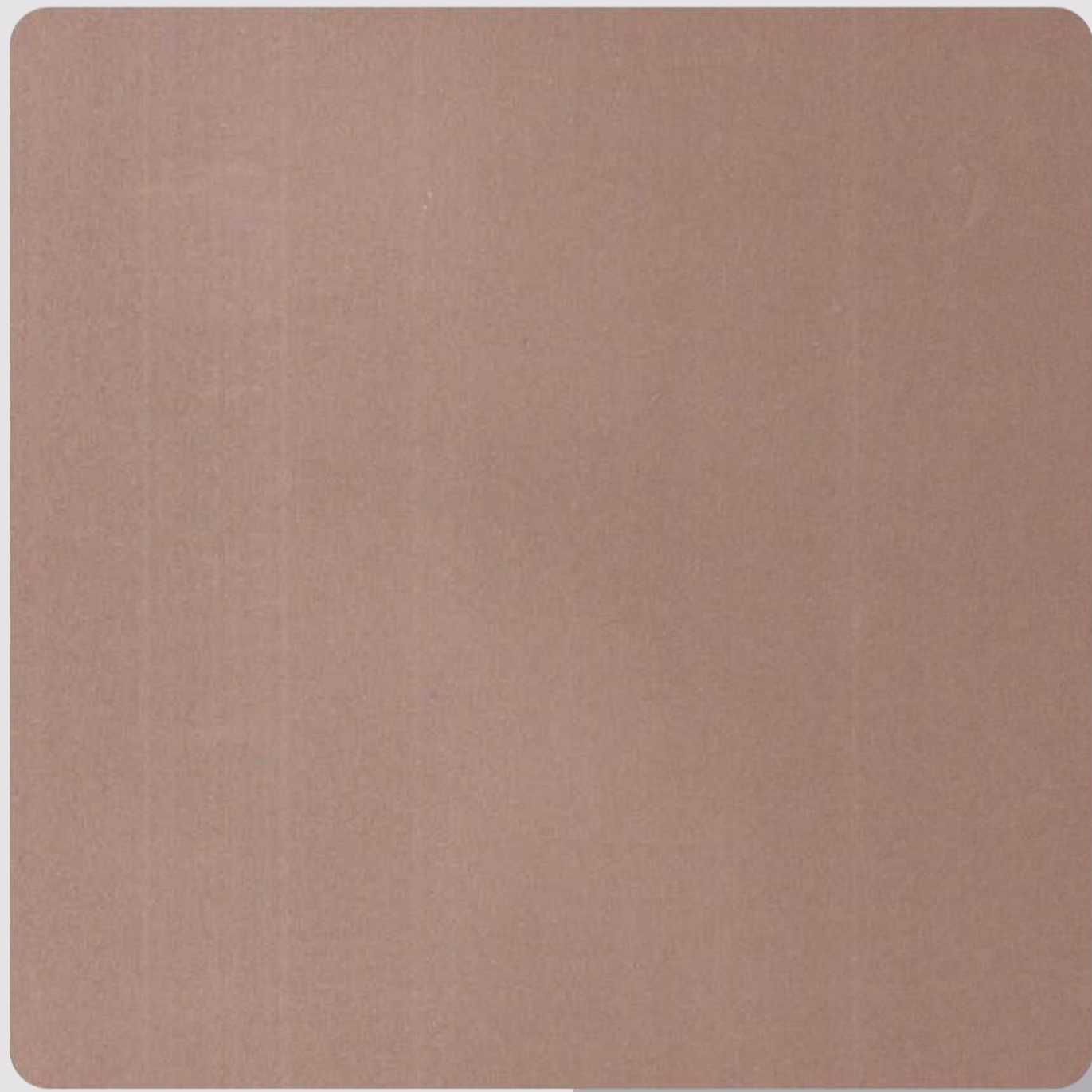
The "Tarnish Metallum Series" is the perfect product for someone seeking a modern look without settling for second best. Renowned for its qualities like rough finishes and resistance to mold and mildew, which makes it perfect for outdoor use! These Panels comes with PVDF/FEVE coating and are built with advanced manufacturing techniques resulting in a structure that is UV resistant while offering 15 years of warranty.





Glazed
COPPER

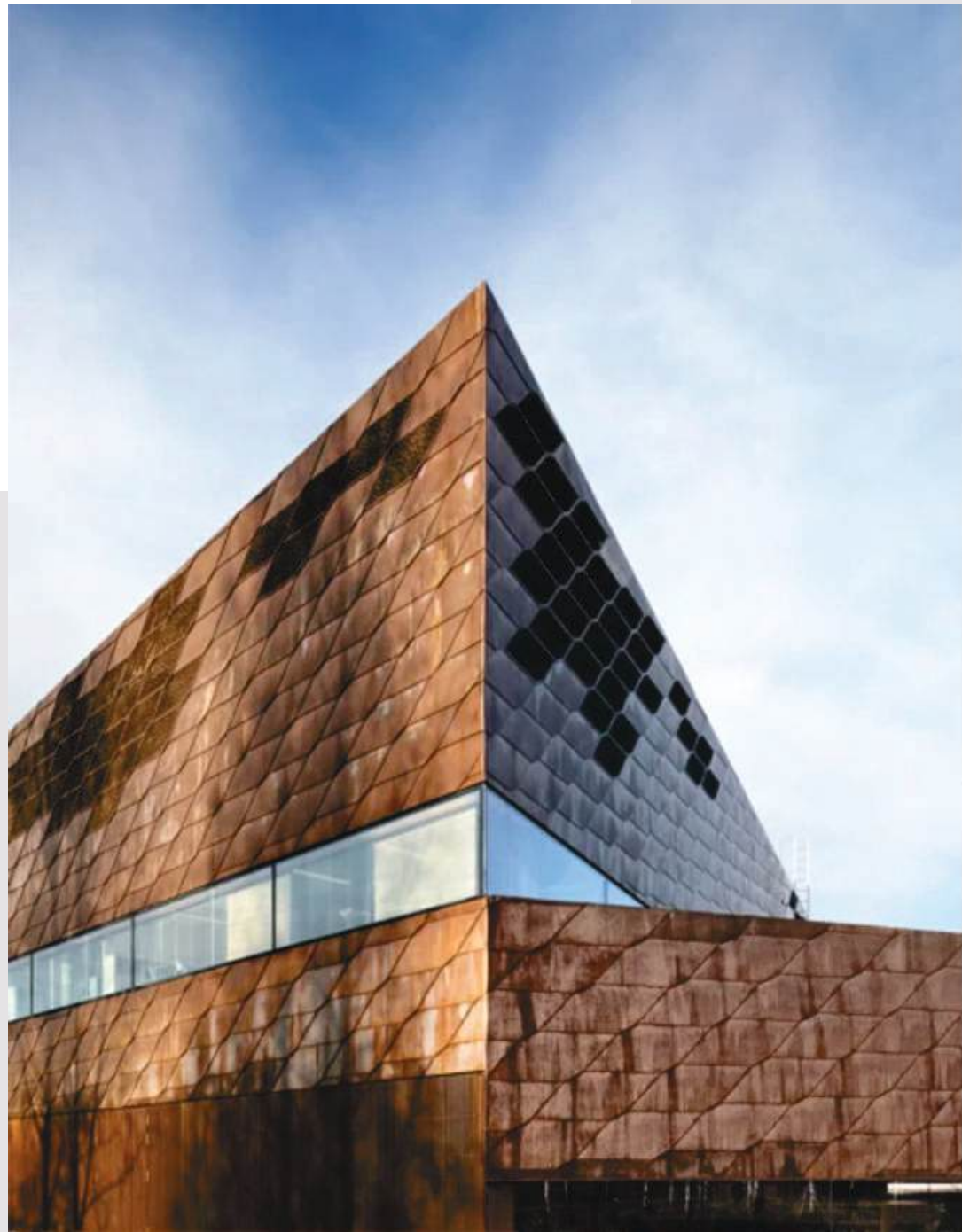
VA-10001



This shade colour depends on mill finish surface. Kindly confirm with sales representative.

Seinäjoki City Library, Finland

Designed by Finland-based **JKMM Architects**, the library is part of the city's cultural and administrative center previously built by architect Alvar Aalto. The shingled copper façade provides a welcome contrast to neighboring buildings' white exteriors.



Completed in 2013



Elegant
COPPER
VA-10002



This shade colour depends on mill finish surface. Kindly confirm with sales representative.

Public Middle School of Labarthe-sur-Lèze, France

With the goal to build a school that met both educational and environmental standards, French firm **LCR Architectes** designed the Public Middle School of Labarthe-sur-Lèze to include two axes of natural copper siding and glass, meant to promote open communication. The brown copper becomes one with the land and showcases the building's sustainability as it gets smoother—and more interesting—with time.



Completed in 2012



Aged
COPPER
VA-10003



This shade colour depends on mill finish surface. Kindly confirm with sales representative.

Isenberg School Of Management Business UNITED STATES

The building's exterior design is stunning, and it gives a new face to Isenberg and perhaps the university, but the architects have made it functional as well.

Architects: Bjarke Ingels Group



Completed in 2019



Lavish
**COPPER
OXIDO**
VA-10004



This shade colour depends on mill finish surface. Kindly confirm with sales representative.

Eagle Harbor Market Building Washington

Coates Design Architects chose to sheath this 50,000-square-foot wing of the Columbus Museum of Art with pre-patinated copper, in a sense using a time-honored material in a contemporary way to both counter and complement the bronze detailing of the historic wing as well as reference the nearby First Congregation Church's naturally oxidized copper roofs and spires

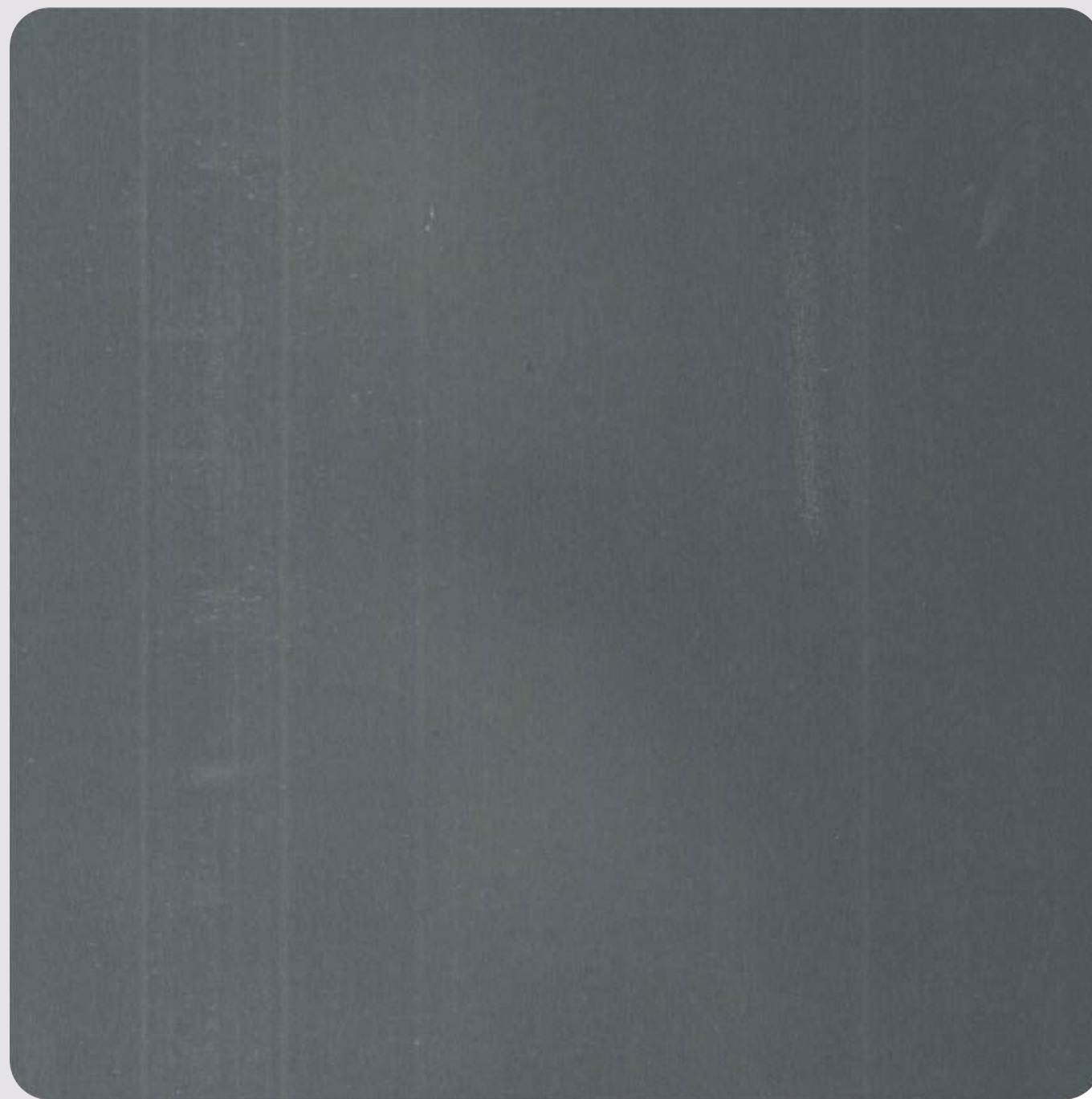


Completed in 2013



Glazed
TITANIUM

VA-10008



This shade colour depends on mill finish surface. Kindly confirm with sales representative.

The Smile

Manhattan, USA.

Designed by the Danish architecture office **BIG-Bjarke Ingels Group**, the monumental smile made of Titanium extends along the 126th Street in the Manhattan district of East Harlem.

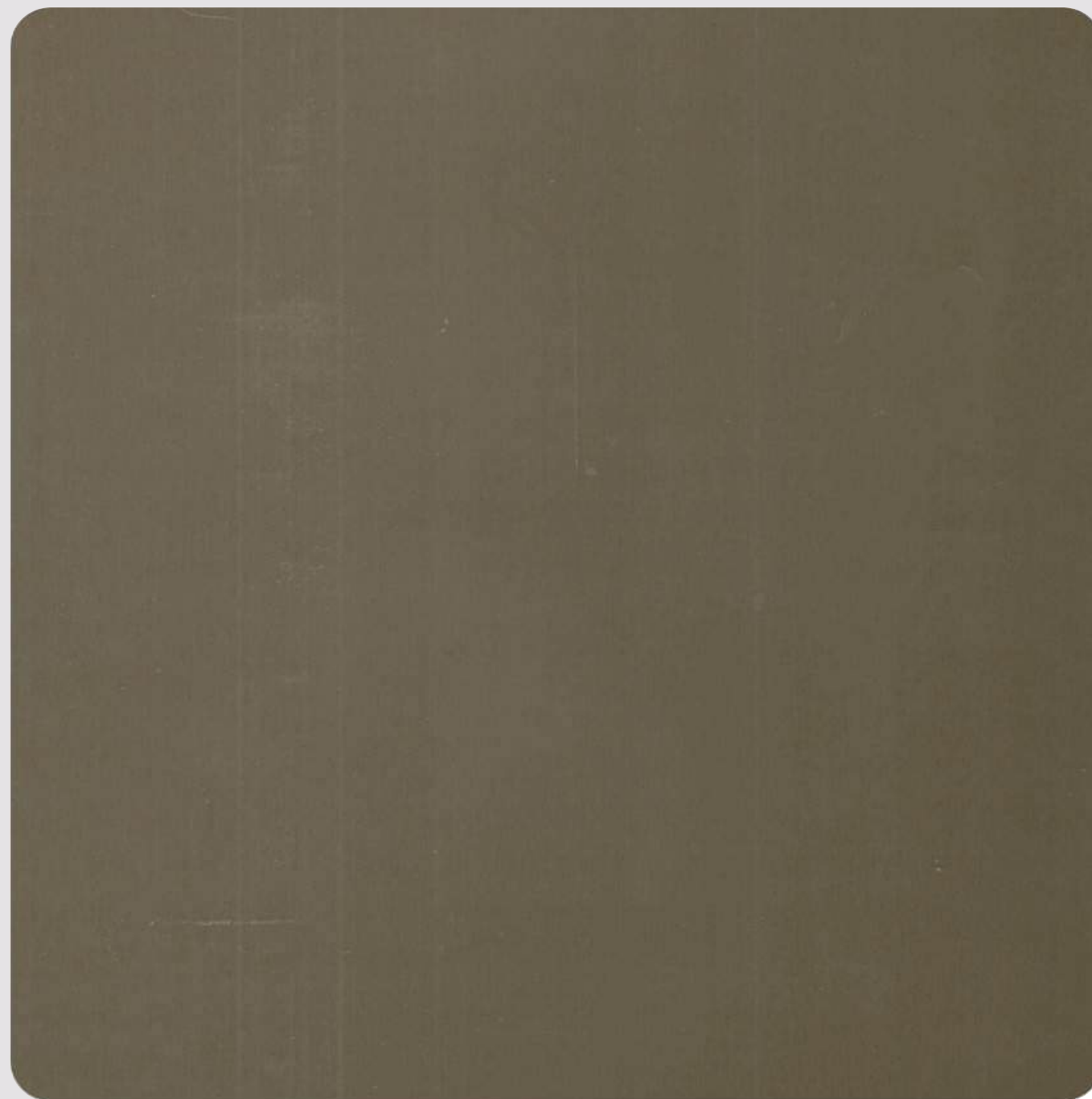


Completed in 2021



Glazed
BRONZE

VA-10009



This shade colour depends on mill finish surface. Kindly confirm with sales representative.

Relais San Lorenzo

Bergamo, Italy.

Relais San Lorenzo has reopened after work, designed by Natalini Architetti, to refurbish and extend the hotel. It sits on Piazza Mascheroni, a long, narrow piazza right near the heart of the oldest part of the upper city marked by gracious old buildings on two sides and the slopes of the Maresana hill on one.

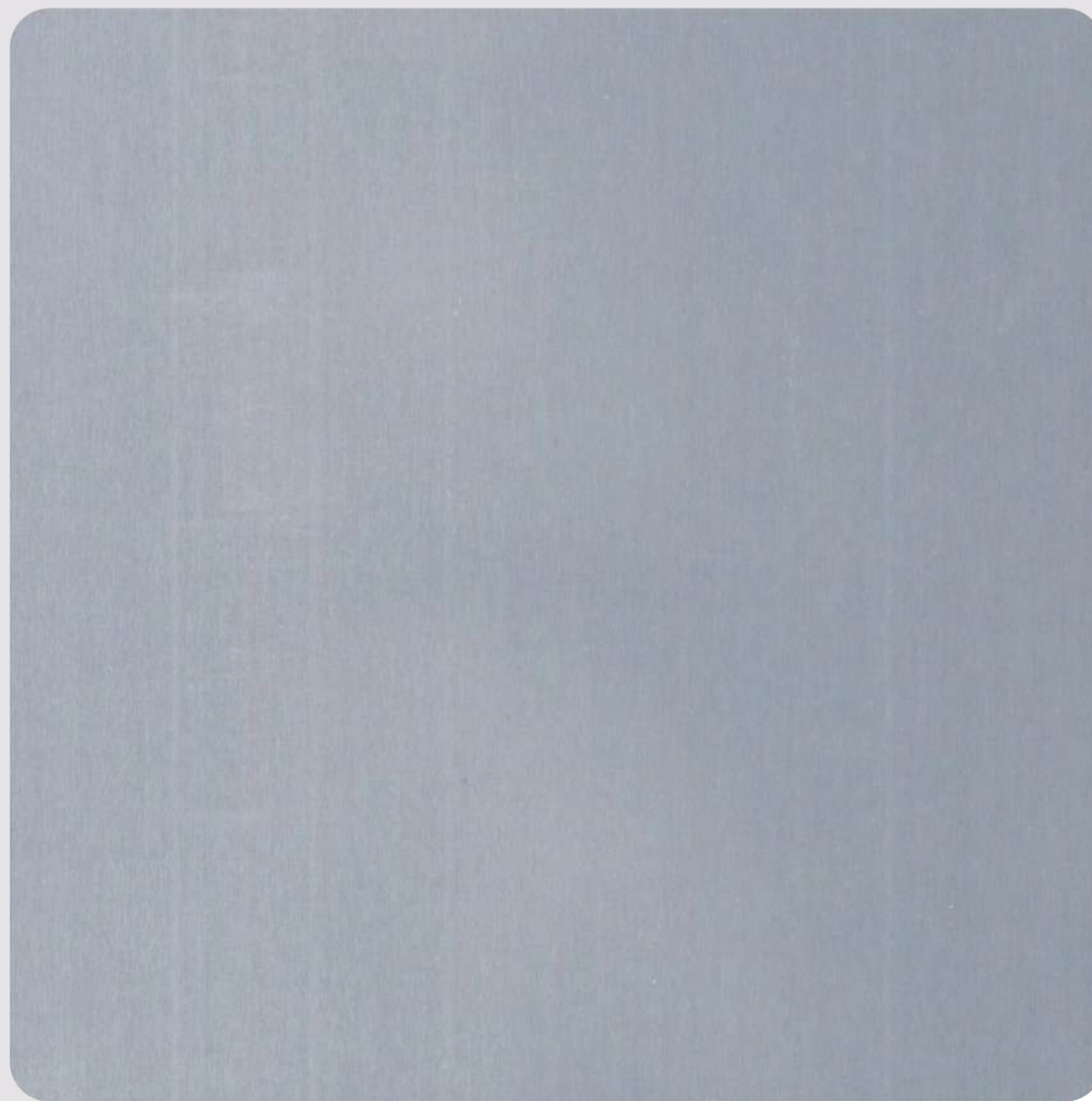


Completed in 2020



Glazed
STEEL

VA-10005



This shade colour depends on mill finish surface. Kindly confirm with sales representative.

National Museum of the United States Army Washington, D.C.

Designed by **Skidmore, Owings & Merrill (SOM)**, New York City, the building is made up of a series of five pavilions connected by glass connectors to evoke the sense of an interconnected community. Inside there are galleries, retail space, a café, 360-degree theater, Veterans' Hall for events, and three terraced gardens, including one specifically honoring Medal of Honor recipients. Each space is supplemented by a memorial garden, a parade field and grandstand, as well as an Army Trail with interpretive stations.



Completed in 2020



Elegant
STEEL
VA-10006



This shade colour depends on mill finish surface. Kindly confirm with sales representative.

Bayuquan Poly Theatre

North East China

Designed by **SH-DSD China Architecture Studio**. Bayuquan Poly Theatre has 3 levels above the ground level. The main construction contains a large Dance Theatre which is specific for dancing and musical performance with a capacity of 1600 people and a multi-functional theatre which can hold 800 people for drama play.



Completed in 2013



Lavish
**SILVER
OXIDO**

VA-10007



This shade colour depends on mill finish surface. Kindly confirm with sales representative.

Primary school, Karlsruhe, **Germany**



Completed in 2013

Designed by **HSD architects**, Lemgo primary school in Karlsruhe creates a modern addition to the existing network of schools. A facade of galvanized panels provides a vibrant, bold and contemporary aesthetic that is a throwback to the town's industrial heritage.



Pre-Rusted
COR-TEN

VA-10010



Broadcasting Tower **Leeds, England.**



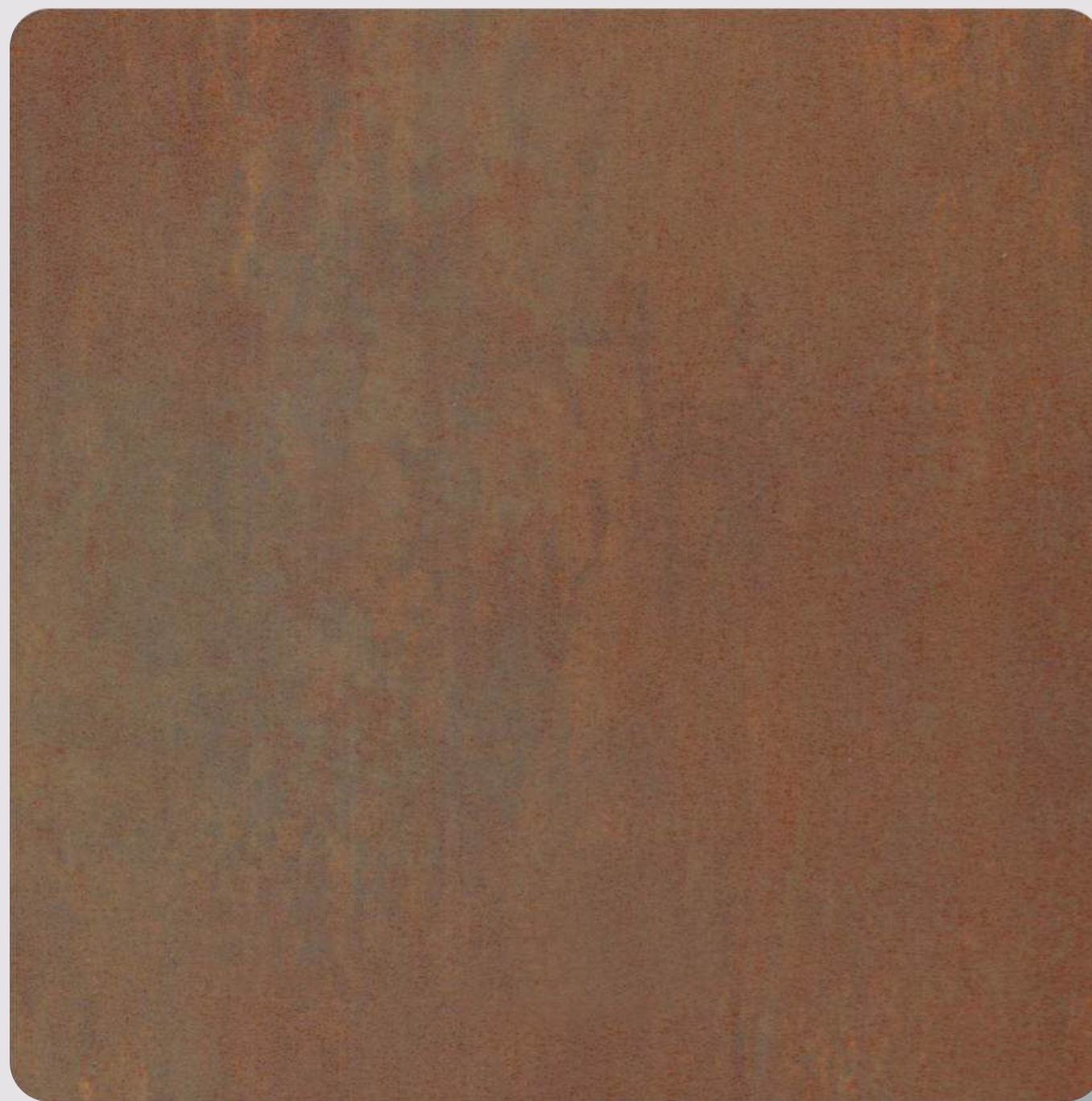
Completed in 2009

Broadcasting Tower is a university building in Broadcasting Place in Woodhouse Lane, Leeds, England. Designed by Feilden Clegg Bradley Studios.



Post-Rusted
COR-TEN

VA-10011



Residence Project **Colorado, USA**

This is a residence designed by Skylab studio and located in Snowmass, Colorado. The weathered exterior has a beautiful reddish brown nuance which is perfectly suited for the location.

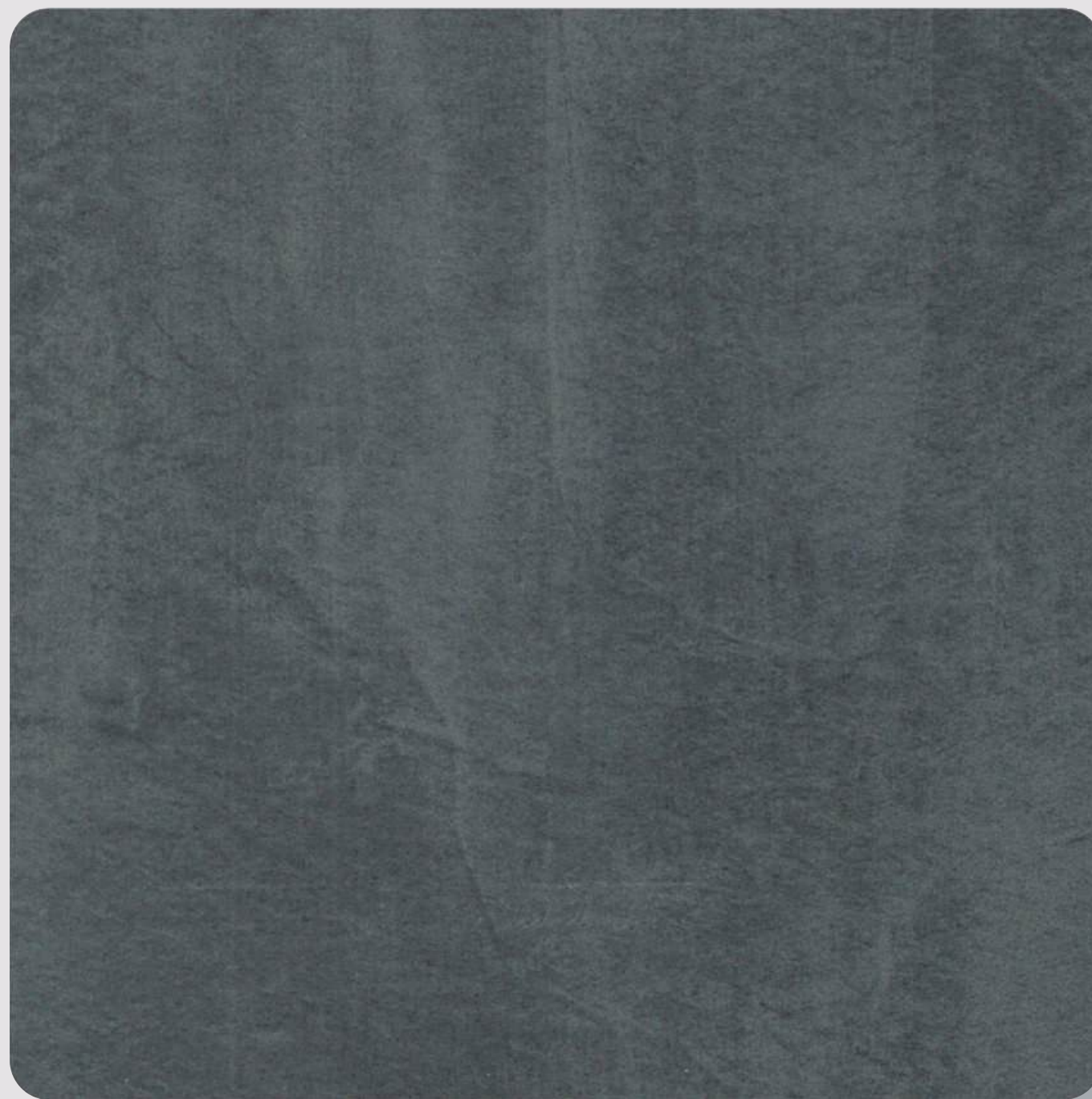


Completed in 2022



Carbonum
STEEL

VA-10013



Prestige Mall Istanbul, Turkey

Designed by DILEKCI Architects (DDA), Prestige Mall is where structure meets architecture, it is a place where the form communicates with its surroundings at human scale. The building shows preeminence on the integration of its form by its mass, interior effects and in many other ways



Completed in 2007



VERDIGRIS

VA-10012



Biblioteka Uniwersytecka Warszawie Poland.

The BUW library was designed by **Marek Budzyski and Zbigniew Badowski**, who won a competition for it in 1993. Example of a unique collaboration between the city and the architects, the fruit of which is this city-like building



Completed in 2009



Rotten
WOOD

VA-10014



Community church with cultural & administration facilities, Knarvik **Norway**

Reiulf Ramstad Arkitekter conceived the Community Church of Knarvik, a strikingly angular chapel situated some 45 miles west of the city of Bergen in Hordaland, Norway. Built for religious services and to host local arts and music events, the pre-weathered-pine-clad house of worship features a dramatically pointed pyramidal steeple.



Completed in 2014



Elegant
TITANIUM

VA-10015



This shade colour depends on mill finish surface. Kindly confirm with sales representative.

Desjardins Group Head Office **CANADA**

Designed by **ABCP architecture, Anne Carrier Architectes**. The project involved the construction of a new, four-storey building designed to meet LEED certification standards.



Completed in 2013

Product Information

A	Panel Dimensions					
	Standard	2440 mm x 1220 mm		3050 mm x 1220 mm		3660 mm x 1220 mm
B	Panel Thickness (LDPE/Mineral/Aluminium Corrugated)					
	Panel	Core		Top Skin	Bottom Skin	Alloy
	3.0 mm	2.4 mm		0.30 mm	0.30 mm	3105
	4.0 mm	3.4 mm		0.30 mm	0.30 mm	3105
	4.0 mm	3.0 mm		0.50 mm	0.50 mm	3105
C	Coating Type					
	Top Skin					Bottom Skin
	PVDF/FEVE					PE
	Paint supplier : Spectrum / PPG / Nippon / Monopol / Akzonobel					
D	Permissible Product Tolerance					
	Size				Thickness	
	Length	Width	Bow	Squareness	Panel	Coil
	± 4.0 mm	± 2.0 mm	Maximum 0.5%	Maximum ± 2.0 mm	± 0.20 mm	± 0.03 mm

Viva warrants that its products are free from manufacturing defects and they are fit and suitable for usual purpose. The product should be inspected prior to installation and our liability will be limited to the cost of the product only.

* Please Note : The colors displayed in this brochure are digital representations & may vary from the actual shades. For accurate color matching, please refer to physical samples.

Technical Details



Property	Test Method	Units	Polyethylene Core	Mineral Core (Class B)	Mineral Core (Class A2)	Aluminium Corrugated Core (Class A2)
ACP Thickness	Measurement	mm	4.0	4.0	4.0	4.0
Coil Thickness	Measurement	mm	0.5	0.5	0.5	0.5
ACP Weight	Measurement	Kg/m2	6.0	7.5	8.2	3.8
Core Density	Measurement	-	1.10	1.6	1.87	2.74
Peel Test	ASTM D 903	N/mm	Min.7	Min.7	Min.7	Min.7
ACP Tensile Strength	ASTM D 638	Mpa	Min.40	Min.40	Min.45	Min.45
ACP Yield Strength	ASTM D 638	Mpa	Min.35	Min.35	Min.40	Min.40
ACP Elongation	ASTM D 638	%	Min.5	Min.5	Min.5	Min.5
Thermal Expansion	ASTM D 696	mm/M/100° C	2.4	2.4	2.4	2.4
Heat Transmission Coefficient (U)	ASTM C 1363	W/m2K	5.52	5.53	5.53	5.53
Fire Classification	EN 13501 - 1	-	-	Class B-s1-d0	Class A2 - s1- d0	Class A2 - s1 - d0
Fire Rating	EN 13501 - 1	-	-	Class B	Class A2	Class A2
Sound Transmission Loss	ASTM E 90	dB	25	25	25	25
Sound Absorption Factor	ISO 354	-	0.05	0.05	0.05	0.05

* All Shades are available in 6 Star(0.30mm) & 7 Star (0.50mm)

* For 0.50mm Minimum MOQ Is 1000 sq.mt.



VIVA COMPOSITE
PANEL PVT. LTD.

Head Office:

Viva Composite Panels Pvt. Ltd.
601, 6th Floor, A Wing, Times Square Building, Marol
Naka, Andheri - Kurla Rd, Andheri East, Mumbai,
Maharashtra - 400059

Factory Address:

Survey No, 85/8, 85/9, 85/10, 68/1, 70/14,
At Post: Khattalwada, Manekpur Road, Opp Poultry
Farm, Near Apar Industries Ltd, Tal-Umbergoan,
Dist - Valsad, Station - Sanjan, Gujarat - 396120

Branch Offices:

Delhi | Bengaluru | Ahmedabad | Hyderabad | Chennai
Bhubaneshwar | Jaipur | Raipur | Lucknow | Udaipur
Surat | Ranchi | Kochi | Hubli | Indore | Pune | Nagpur
Nashik | Bhopal | Kolkata

Overseas Associates

USA | UAE | South Africa | Sri Lanka
Poland | Saudi Arabia

Overseas Branch

Qatar -

Viva Composite Panels Trading W.L.L.
Al Wukair, GWC-B1-A12-17 & 18, Doha, Qatar

Kuwait -

Viva Composite Panels Wholesale Co. L.L.C
Al-Qurain, Kuwait

Dubai -

Vivere Star Panel Trading L.L.C.
Dubai, U.A.E.

VOL - 5 | 2025



Follow vivaacps at



✉ info@vivaacp.com

☎ 1800 313 3770 (Toll Free)

🌐 vivaacp.com