



Viva[®]
Metal Composite Panel

A STROLL THROUGH
— THE **ART CITY**



vivaacp.com

About Viva

Established Innovators

Pioneering the ACP Industry
since 2003

Quality Assurance

Rigorous in-house testing (100+ tests)
ensures ACP sheets meet top standards.

State-of-the-Art Facilities

Equipped with cutting-edge machinery
in Gujarat for high-quality ACP always.

Fire-Safe

Pioneers of FR Class A2+ ACCP in
India, ensuring best-in-class ACP.

Trusted Material Sources

We source materials only from certified
vendors, like Hindalco, Nippon & many more.

Customer-Centric Approach

We are committed to customer satisfaction with
our value-engineered high-quality products.



What Sets Us Apart?



25+ Years

Manufacturing Excellence

4 Colour

Coating Lines

15 Million M²

Annual Production Capacity

500+ Shades

Customisable Shades

14 Production

Lines

100+ Quality

In-house Lab Tests

A Benchmark in Quality

FR A1, A2 & B

Weather Resistant

Versatile Application

Low Maintenance

15 Years
Warranty

Welcome to **SANTA FE**



A city is not just a place.

It's the sum of its **Populace, Art, Culture,
& History.**

Santa Fe is the oldest capital of the **United States** and the first **UNESCO Creative City**.

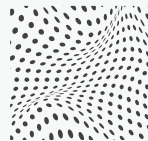
The sun bears witness to the romance of heritage and modern art throughout the year. Santa Fe is peppered with sun-kissed avenues, and adobe structures that serve as a portal to an alternate time. An eclectic mix of Victorian, Italian and Spanish architecture is manifested in the city.

As we stroll through the city, we experience warm shades that remind us of living a full life built on the foundation of health, stamina, and strength.

Santa Fe Series is our attempt to encapsulate human endeavour and provide an exceptional experience that is not just beautiful to look at but also magic to touch.

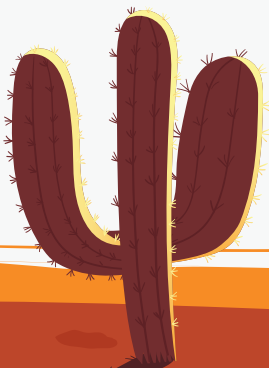


Scan to have a look at
our Santa-Fe Digital Shades



SYNCHRO
TECHNOLOGY

Experience unmatched realism with textures that align perfectly with printed designs, bringing surfaces to life with a natural feel and premium finish



Witness Pantone's Colour of the Year



Terracotta

Inspired
by the **Pantone's**
Colour of the Year
2024

Peach Fuzz

- is Pantone's COTY for 2024.

According to their official website - Peach Fuzz is a velvety gentle peach whose all-embracing spirit enriches the heart, mind, and body.

Emerging from pandemic challenges, a shift towards work-life balance is evident. With a slower pace, productivity prioritizes well-being, urging intentional living. Peach Fuzz embodies this transition, symbolizing warmth, community strength, and inner peace.

Architects, meeting diverse client needs, find inspiration in this hue, emphasizing comfort, safety, and aesthetics in design. From plans to completion, Peach Fuzz fosters harmonious environments, elevating human experiences.

Meow Wolf 2008

— Architect - **Dan Craig,**
Shears Adkins Rockmore Architects

Mystery, Magnificence and Multimedia, all under one roof. That is the Meow Wolf, and George RR Martin is the Chief World Builder for it. Intriguing, isn't it?

When we first encountered the pale white structure, we wondered what could it possibly behold. And, just within seconds of walking in here, we were mesmerized by its magical realm. The plain, simple white could hold a wonderland in it. Awed by its glory, we pulled in the colour Calce Chalk for you, in our Santa Fe Series.

— **#Editor'sChoice**



Witness Calce Chalk



VA 12004



2014 Cumbres House

— Architect - **DCPP Arquitectos**

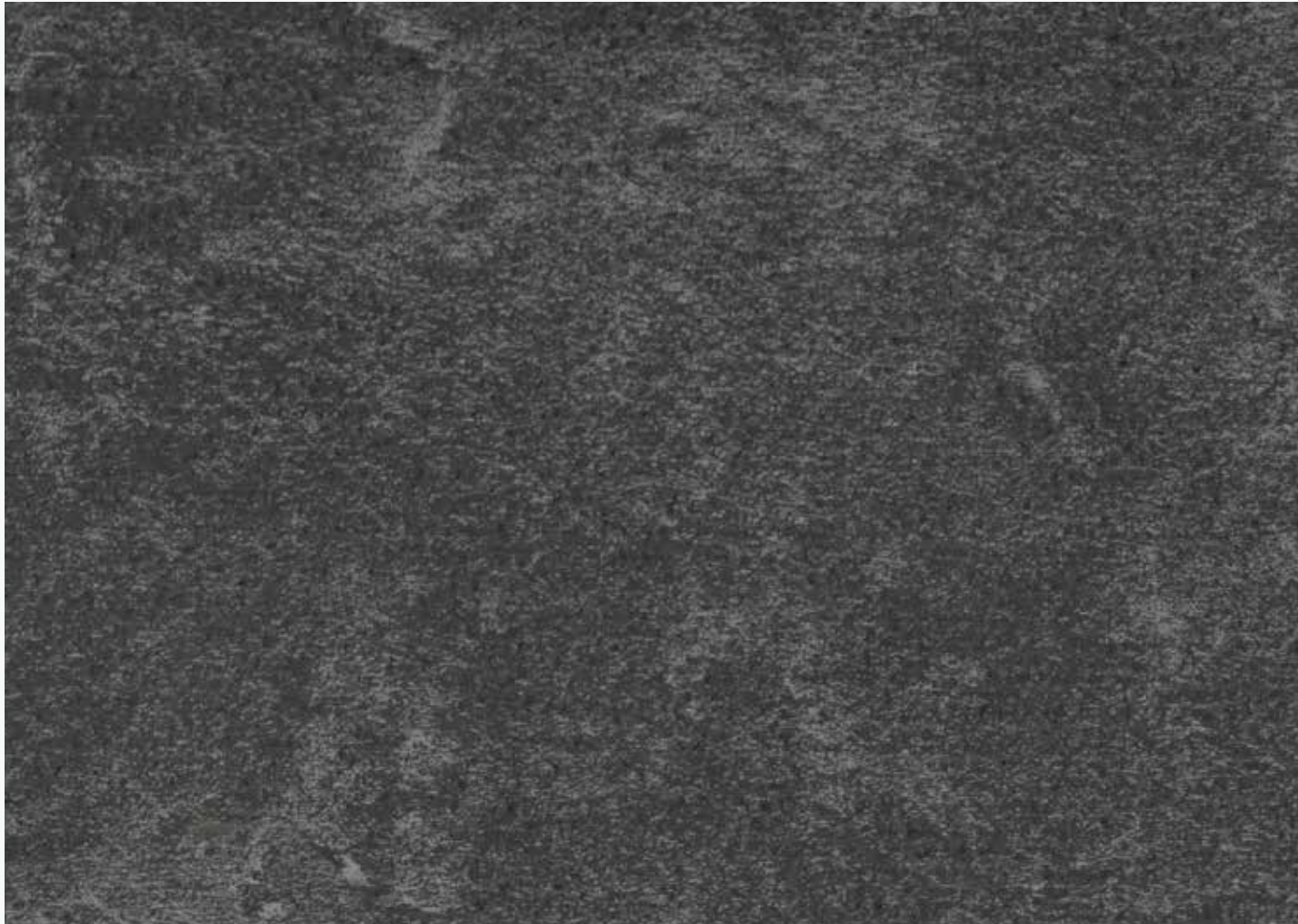
Embrace the fusion of modernity and sophistication with Cumbres House, a visionary residential project situated in Santa Fe's dynamic Cumbres neighbourhood, Mexico City.

Drawing inspiration from the sleek lines and avant-garde aesthetic of Cumbres House, we introduce Pacific Anthracite - VA 12007.

— **#SignatureExperience**



Feel **Pacific Anthracite**



VA 12007

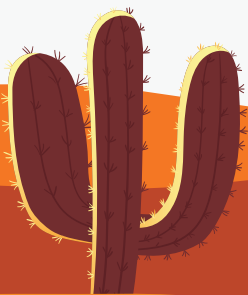


Pottawatomie County Museum

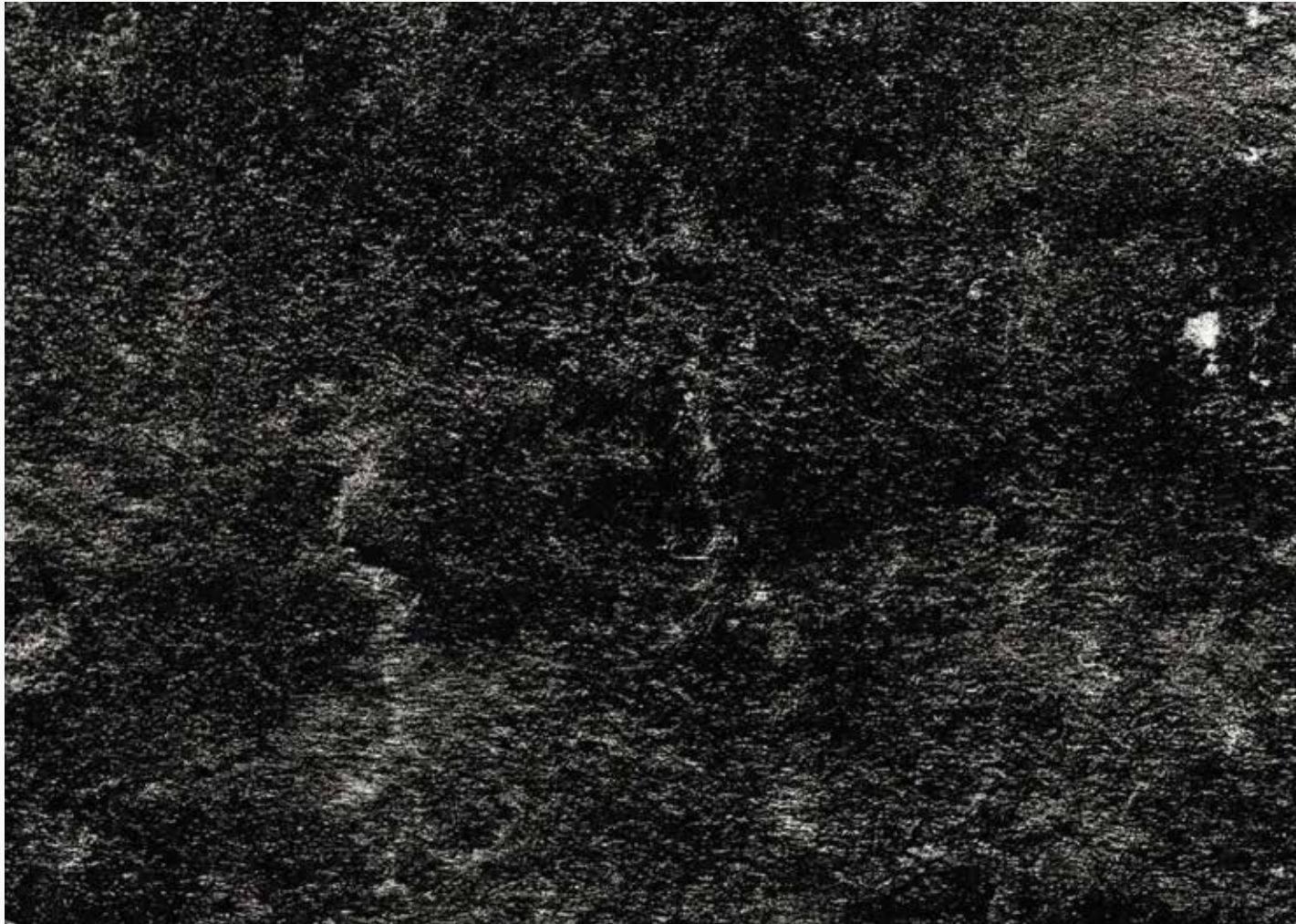
— Architect - **Charles Frederick Whittlesey**

It houses an abundance of artefacts and information about the history of Pottawatomie County. An eclectic collection of stories, art pieces and historic objects is found here. We were mystified by the ancient array, and we admired the hue the monument was constructed in. So, dedicated to take a little memory of monument, and carefully preserve it in our Santa Fe Collection.

#LandmarkofHistory



Experience **Basalt Black**



VA 12006

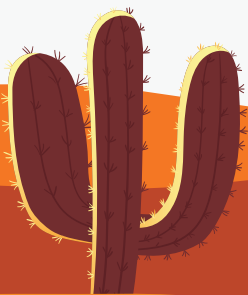


Sundial House

— Architect - **Scott Specht, AIA,**
Specht Architects

A beautiful Ridgetop House in Santa Fe, organized around two perpendicular board-formed concrete walls, is the SunDial House. In the city enchanted with art, aesthetic and archaic divinity, the House speaks modernity. The grey hue subtle, yet stable, manifests solidity and durability. Being intrigued by the simplicity and innovation of the Specht Architects, we decided to adorn modern constructions with the Cementum shade.

— **#HighlyRecommended**



Experience **Cementum Grey**



VA 12003



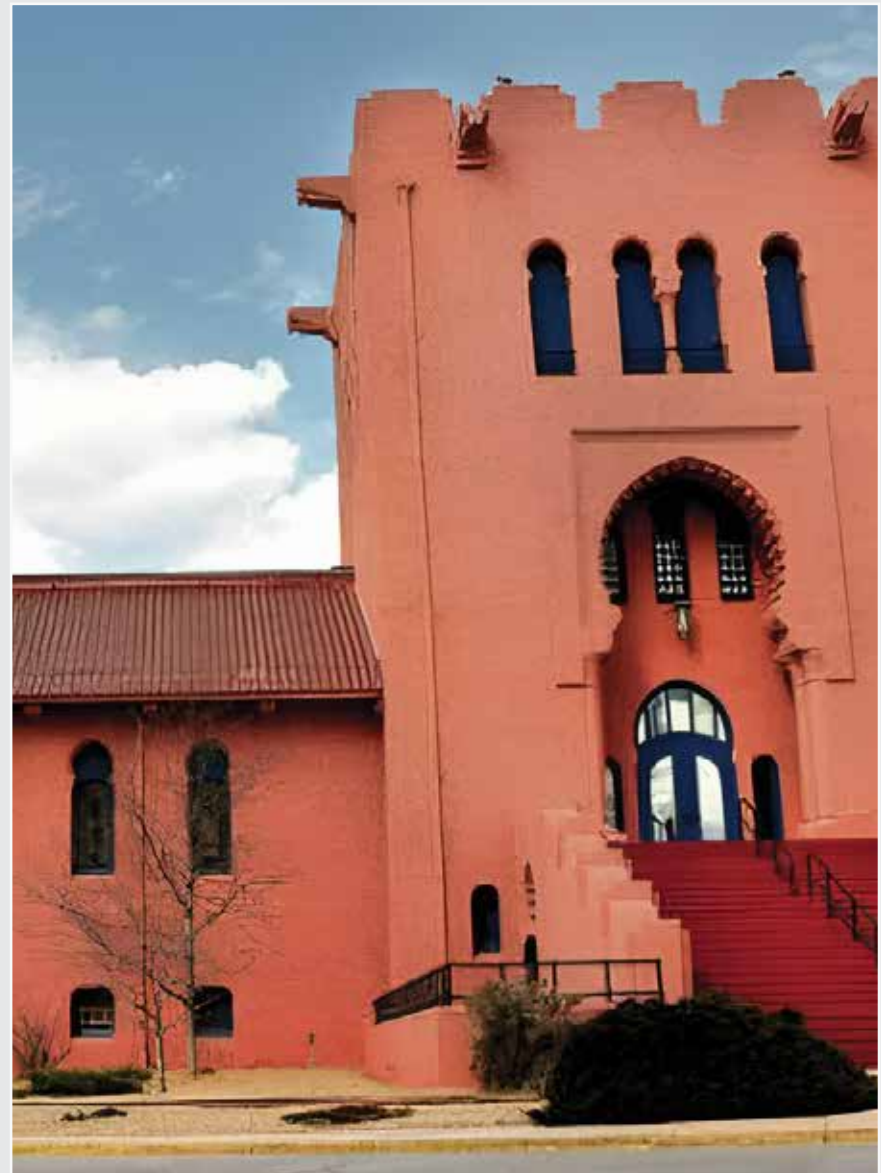
1912 Pepto Bismol Building

— Architect - **Harper Cunningham**

The structure was built to resemble Alhambra in Spain, where Queen Isabela christened Santa Fe's name. The Pink hue of the structure distinctively stands apart from the rest of the Santa Fe Architecture. Being allured by this unique shade and its subtle sight, we ventured upon the thought of including the shade in our Santa Fe collection.



#BucketList



Discover **Terracotta**



VA 12002



Loretto Chapel

— Architect - **Projectus Mouly**

A divine replication of the Gothic Age, the Chapel was built by a French Architect for the sisters of Loretto. It's revered for its 20 ft long circular staircase and its sleek curves which charmed us, while the divine rustic shade soothed our eyes. We found the beige hue admirable, and decided to bring it to you with an Urban Touch.

#TravelersChoice



Enjoy **Urban Beige**



VA 12001



1867 Soldiers Monument

— Architect - **John & Michael McGee**

Located in the midst of the Santa Fe Plaza, the Soldier's Monument is a memorial monument erected as a 33 feet stone cenotaph. While taking a stride through the plaza, we were mesmerized by the downtown beauty of the monument. Thereby, inspired by the earthy tone, we bring this shade to you in our Santa Fe Collection.

#IconicSpot



A touch of **Victorian Yellow**



VA 12005



Shield Your Structures with **Viva Fire Retardant Panels**

FR ACP
Class A1, A2, B



Certification:

NFPA 285-2019 | EN 13501-1:2018
ASTM D1929-20 | ASTM E84-22

Our Series Tailored for World-Class Architecture



& Many More....

A Closer Look: **Technical Aspects**

A	Panel Dimensions					
	Standard	2440 mm x 1220 mm	3050 mm x 1220 mm	3660 mm x 1220 mm		
B	Panel Thickness (LDPE Mineral (Class B) Mineral (Class A))					
	Panel	Core	Top Skin	Bottom Skin	Alloy	
	6 Star					
	3.0 mm	2.4 mm	0.30 mm	0.30 mm	3105	
	4.0 mm	3.4 mm	0.30 mm	0.30 mm	3105	
	7 Star					
	4.0 mm	3.0 mm	0.50 mm	0.50 mm	3105	
C	Coating Type					
	Top Skin	Bottom Skin		Paint supplier: Nippon Spectrum JSW Berger Becker PPG Akzonobel		
	PVDF/FEVE	PE				
D	Permissible Product Tolerance					
	Size		Thickness			
	Length	Width	Bow	Squareness	Panel	Coil
	± 4.0mm	± 2.0 mm	Maximum 0.5%	Maximum ± 2.0 mm	± 0.20 mm	± 0.03 mm

*Shade variance may vary on batch variance

*For further queries you may contact our customer care manager at 1800 313 3770

*AA5005 series alloy is available on request

*Our warranties are limited to products supply only

*For 0.50mm Thickness (7 Star) MOQ 1000 Sq.Mt

*Viva warrants that its products are free from manufacturing defects and they are fit and suitable for usual purposes.

*The product should be inspected prior to installation and our liability will be limited to the cost of the product only.

*Please note: The colors displayed in this brochure are digital representations and may vary from the actual shades. For accurate color matching, please refer to physical samples.

A Closer Look: Technical Aspects

Property	Test Method	Units	Polyethylene Core	Mineral Core (Class B)	Mineral Core (Class A2)
ACP Thickness	Measurement	mm	4.0	4.0	4.0
Coil Thickness	Measurement	mm	0.3	0.5	0.5
ACP Weight	Measurement	Kg/m ²	5.4	7.5	8.5
Core Density	Measurement	—	1.10	1.6	1.87
Peel Test	ASTM D 903	N/mm	Min.5	Min.6	Min.7
ACP Tensile Strength	ASTM D 638	Mpa	Min.35	Min.40	Min.45
ACP Yield Strength	ASTM D 638	Mpa	Min.30	Min.35	Min.40
ACP Elongation	ASTM D 638	%	Min.5	Min.5	Min.5
Thermal Expansion	ASTM D 696	mm/M/100°C	2.4	2.4	2.4
Heat Transmission Coefficient (U)	ASTM C 1363	W/m ² K	5.52	5.53	5.53
Fire Classifications	EN 13501 - 1	-	—	Class B-s1,d0	Class A2-s1,d0
Fire Rating	EN 13501 - 1	—	—	Class B	Class A2
Sound Transmission Loss	ASTM E 90	dB	25	30	30
Sound Absorption Factor	ISO 354	—	0.05	0.05	0.05



VIVA COMPOSITE PANEL PVT. LTD.

Head Office:

Viva Composite Panel Pvt. Ltd.,
601, 6th Floor, A Wing, Times Square Building, Marol
Naka, Andheri - Kurla Rd, Andheri East, Mumbai,
Maharashtra - 400059

Factory Address:

Viva 1.0 - Survey No, 85/8, 85/9, 85/10, 68/1, 70/14
Viva 2.0 - Survey No 46/2, 46/3 (New Survey No 5280/P1, 5281)
At Post Khattalwada, Manekpur Road, Near Apar Industries Ltd,
Tal-Umbergoan, Dist - Valsad, Gujarat - 396 120, India.

Branch Offices:

Delhi | Bengaluru | Ahmedabad | Hyderabad
Chennai | Bhubaneshwar | Jaipur | Raipur
Lucknow | Udaipur | Surat | Ranchi | Kochi
Hubli | Indore | Pune | Nagpur | Nashik
Guwahati | Kolkata | Calicut

Overseas Branch

USA -

Viva Americas inc
Delaware, USA

Dubai -

Vivere Star Panel Trading L.L.C.
Dubai, U.A.E.

Qatar -

Viva Composite Panels Trading W.L.L.
Doha, Qatar

Kuwait -

Viva Composite Panels Wholesale Co. L.L.C
Al-Qurain, Kuwait

Overseas Associates

South Africa | Sri Lanka | Saudi Arabia | Poland | Oman



ASIA'S LARGEST
ACP MANUFACTURER



vivaacp.com



1800 313 3770



info@vivaacp.com

